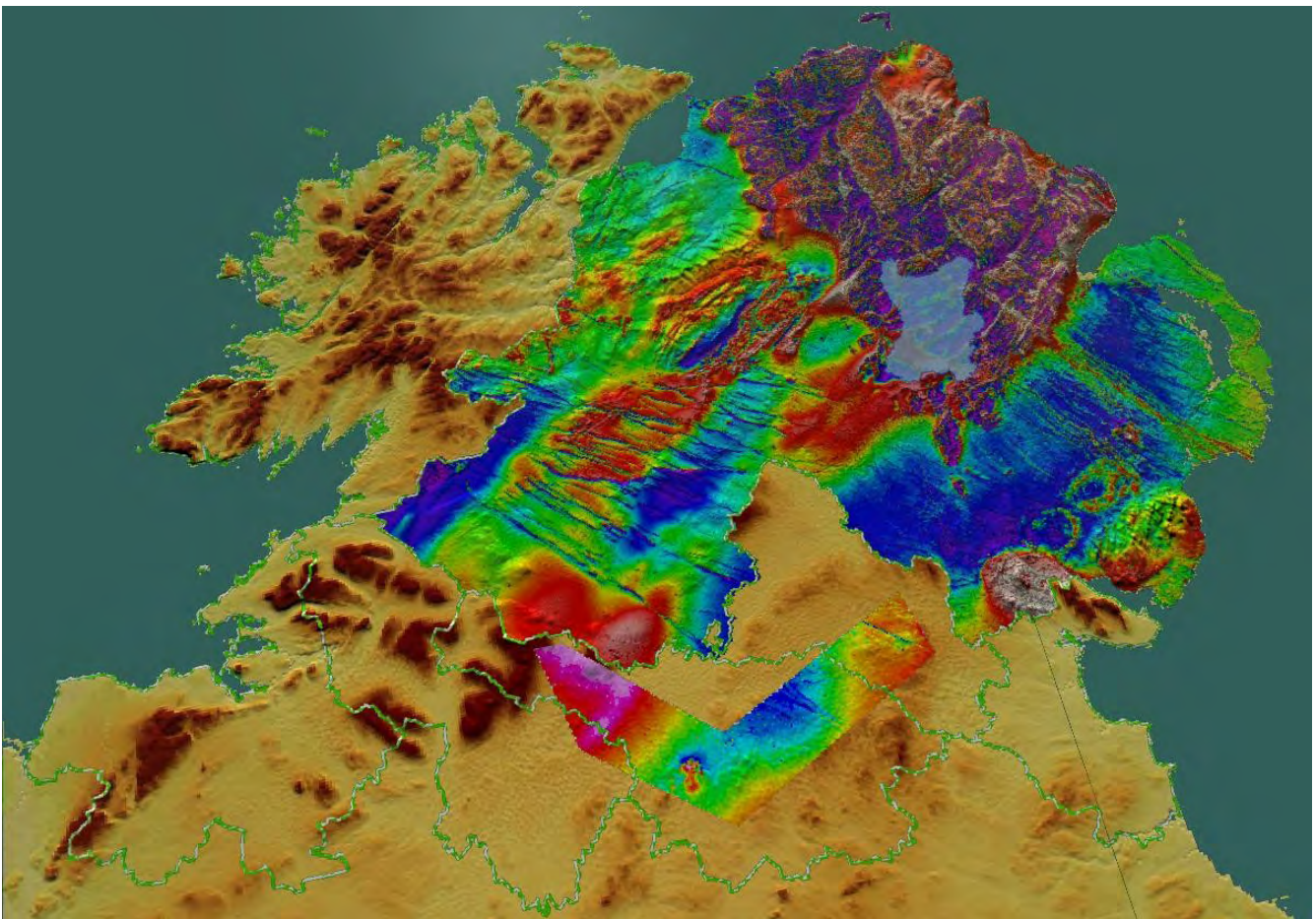




TELLUS BORDER PROJECT



The airborne geophysics survey is an industry-standard low-level survey, comprising measurements of magnetic field, radiometrics and electrical conductivity. The line spacing will be 200 m and the flight direction 345 degrees, to correlate with existing surveys in the region.

The aims of the geophysical survey are to make a seamless cross-border dataset with Northern Ireland and to interpret the geophysical data in the border region. Raw data and value added maps such as radon risk will be made available to stakeholders free of charge. Research projects, based at Dundalk IT and Queens University Belfast will use the geophysical data to investigate soil-carbon, wetlands hydro-ecology and groundwater pollution plumes.

It is anticipated that the geophysical data will be valuable for improving geological maps, managing peat resources, understanding environmental radioactivity and promoting mineral exploration.



A plane equipped with geophysical technology will fly approximately 56m above the ground to collect geological data. The plane is a white, twin propeller plane with a red tail. Its registration number is C-GSGF. The sound of the plane flying overhead is similar to that of a passing lorry.

Latest Activity: Airborne Survey Commences on 26/10/2011

The airborne geophysical survey has commenced in the Cavan area on **Wednesday 26/10/2011**. The map below shows the area currently being surveyed (indicated in red).

