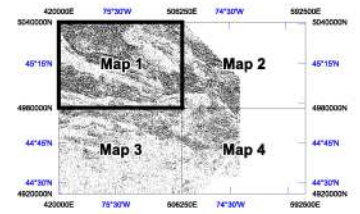


**SHADOW OF THE  
FIRST VERTICAL DERIVATIVE  
OF THE  
TOTAL MAGNETIC INTENSITY  
(nT/m)**



**Airborne Geophysical Survey**  
Eastern Ontario, Canada

**Sample Map 1**

Scale 1 : 250 000



**NOTE:** This map contains sample data. The data does not correspond to the geographic location and does not reflect the true geophysical properties of the area.

Flown and compiled by:  
**Sander Geophysics**  
 High Resolution Airborne Surveys  
 290 Hazel Glen Road, Ottawa, Ontario, Canada K1V 1C1  
 Phone: (613) 251-9628 Fax: (613) 251-0215  
 E-Mail: info@spl.com Web: www.spl.com

Primary Line Spacing	110 m
Primary Line Direction	South - North
Control Line Spacing	800 m
Control Line Direction	East - West
Aircraft Altitude	120 m AGL
Magnetometer Sensor	Geometrics G-822A, cesium vapour
Magnetometer Sensitivity	0.01 nT
Spectrometer	Exploranium GR-620
Crystal Volume	42.0 litres downward and 8.4 litres upward
Aircraft Positioning	Omnistar Real-time Differential GPS
GPS Receiver	NovAtel 3951R, 12 channel
Aircraft	Cessna 208B Grand Caravan, C-GSGZ
Dates Flown	April 11 to May 4, 2001
IGRF Correction	As of date flown
Mean IGRF Correction	42398.16 nT
Magnetic Inclination at 45°15'N, 75°30'W	72.0°
Magnetic Declination at 45°15'N, 75°30'W	-13.9°
Grid Cell Size	30 m
Datum	NAD83
UTM Zone	18N